



Rabbit anti Phosphoserine (pSer) Polyclonal Antibody

Alternative Name(s): nan

Order Information

- **Description:** Phosphoserine (pSer)
- **Catalogue:** 620-680
- **Lot:** See label
- **Size:** 100ug/200ul
- **Host:** Rabbit
- **Clone:** nan
- **Application:** IHC(P), WB
- **Reactivity:** all species

ANTIGEN PREPARATION

A chemically linked phosphoserine .

BACKGROUND

Protein phosphorylation is involved in cell signaling pathways. These cascades are mediated by three types of kinases: serine, threonine and tyrosine kinases which phosphorylate serine, threonine and tyrosine amino acid side chains. These three amino acids are phosphorylated by its specific kinases. These processes are regulated by kinases and phosphatases.

PURIFICATION

The Rabbit IgG is purified by Epitope Affinity Purification

FORMULATION

This affinity purified antibody is supplied in sterile Phosphatebuffered saline (pH7.2) containing antibody stabilizer

SPECIFICITY

This antibody recognizes phosphoserine (pSer) only. It does not cross react with phosphotyrosine or phosphothreonine.

STORAGE

The antibodies are stable for 24 months from date of receipt when stored at -20°C to -70°C . The antibodies can be stored at 2°C - 8°C for three month without detectable loss of activity. Avoid repeated freezing-thawing cycles.

APPLICATIONS/SUGGESTED WORKING DILUTIONS*

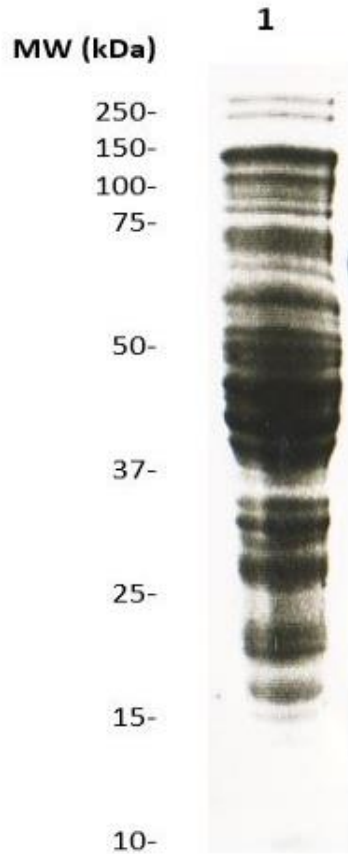
- Western Blot: 0.1-1 $\mu\text{g/ml}$
- ELISA: 0.01-0.1 $\mu\text{g/ml}$
- Immunoprecipitation: 2-5 $\mu\text{g/ml}$
- IHC: 2-10 $\mu\text{g/ml}$
- Flow cytometry: Not tested
- Molecular Weight: nan
- Positive Control: Kidney Tissue
- Cellular Location: Cell Membrane

*Optimal dilutions should be determined by researchers for the specific applications.

FOR RESEARCH USE ONLY.

AbboMax, Inc 2528 Qume Drive, Suite 8, San Jose, California 95131, USA
1 408-573-1898 (Tel). 1 408-573-1858 (Fax). www.abbomax.com info@abbomax.com

DATA ATTACHMENTS



Western Blot: The cell lysate derived from EGF-stimulated A431 was resolved onto 12% SDS-PAGE and immunoblotted by Rabbit anti PhosphoSerine (Cat#620-680) at 1:500. A panel of phosphorylated proteins was observed.

REFERENCES

Trinidad JC, Thalhammer A, Specht CG, Lynn AJ, Baker PR, Schoepfer R, Burlingame AL. Quantitative analysis of synaptic phosphorylation and protein expressio. *Mol. Cell Proteomics* 7 (4): 684–96, 2008

FOR RESEARCH USE ONLY.

AbboMax, Inc 2528 Qume Drive, Suite 8, San Jose, California 95131, USA
1 408-573-1898 (Tel). 1 408-573-1858 (Fax). www.abbomax.com info@abbomax.com